



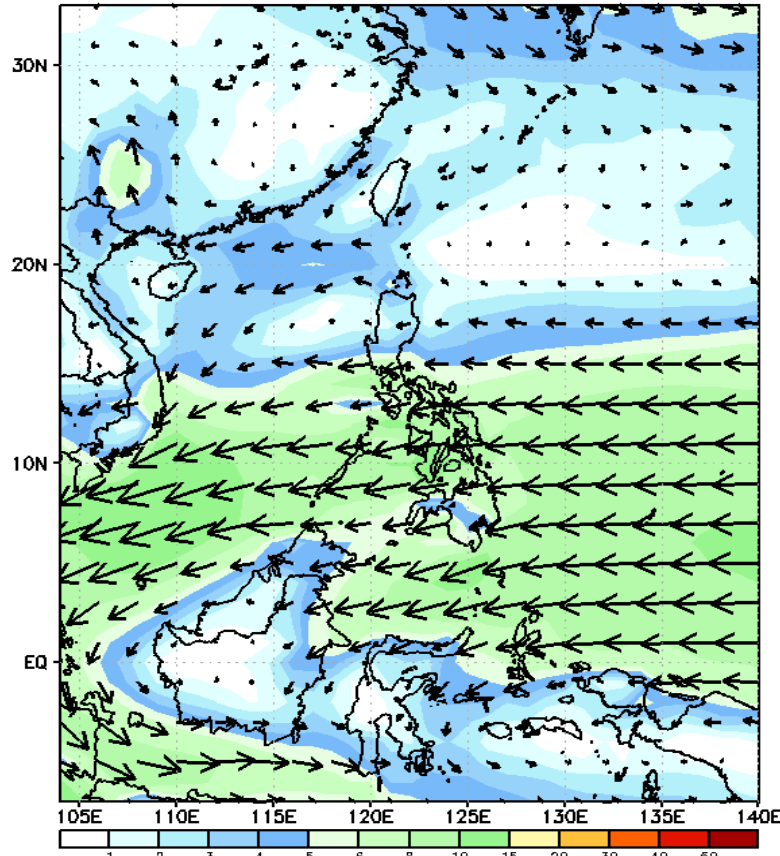
Week 1 & Week 2 Forecast for the Philippines using GEFS Model



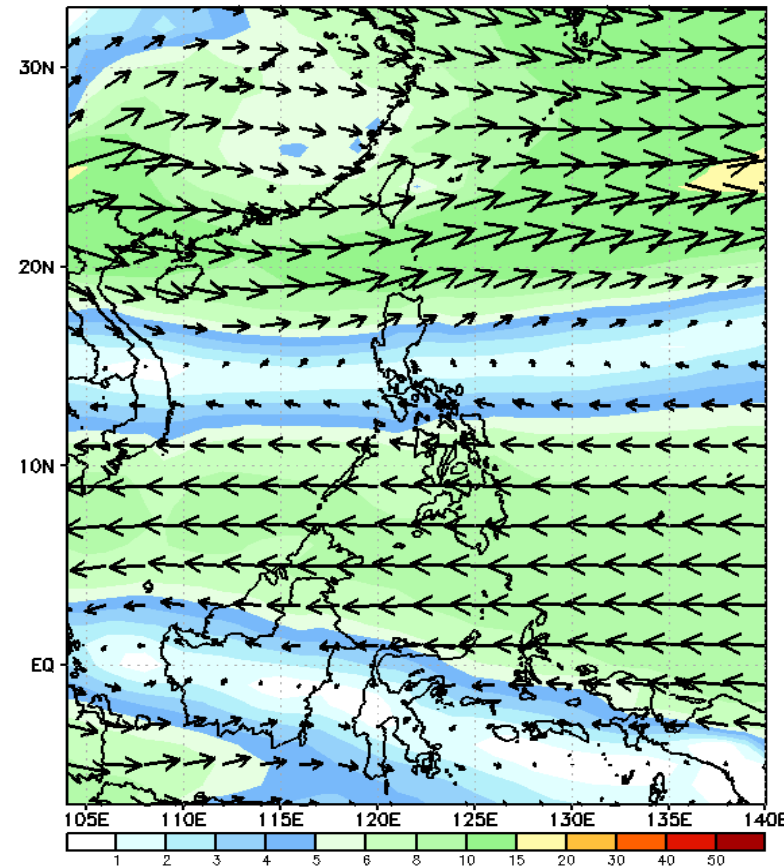
GEFS Week-1 Wind Forecasts:

Week 1: Jan 17-23, 2025

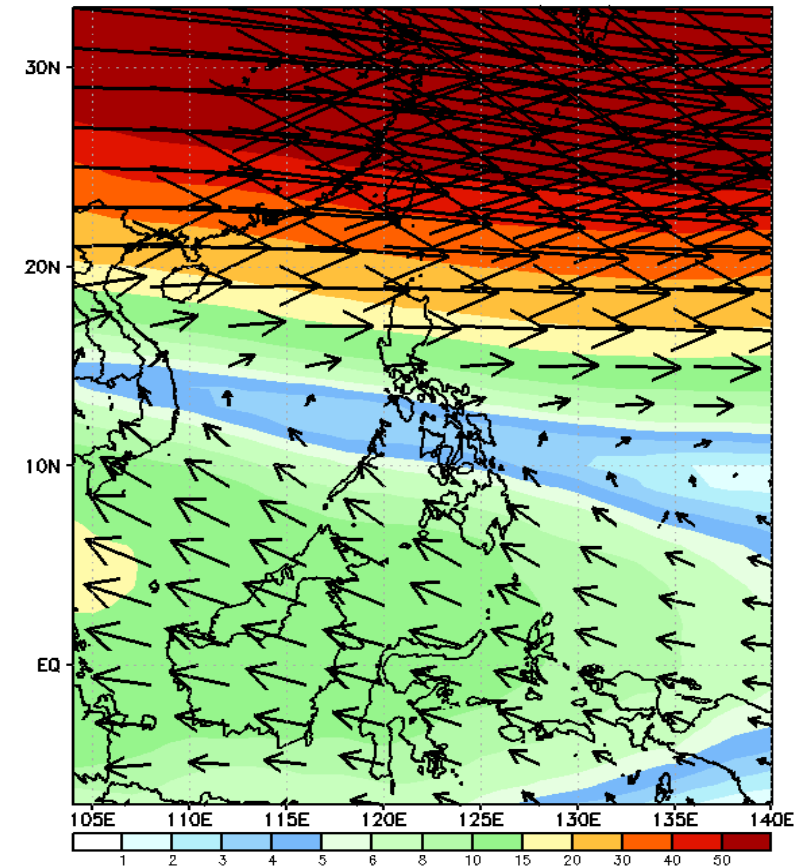
GEFS Week-1 850-hPa Wind Total
Valid: 20250117 - 20250123



GEFS Week-1 700-hPa Wind Total
Valid: 20250117 - 20250123

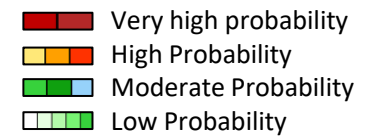


GEFS Week-1 200-hPa Wind Total
Valid: 20250117 - 20250123



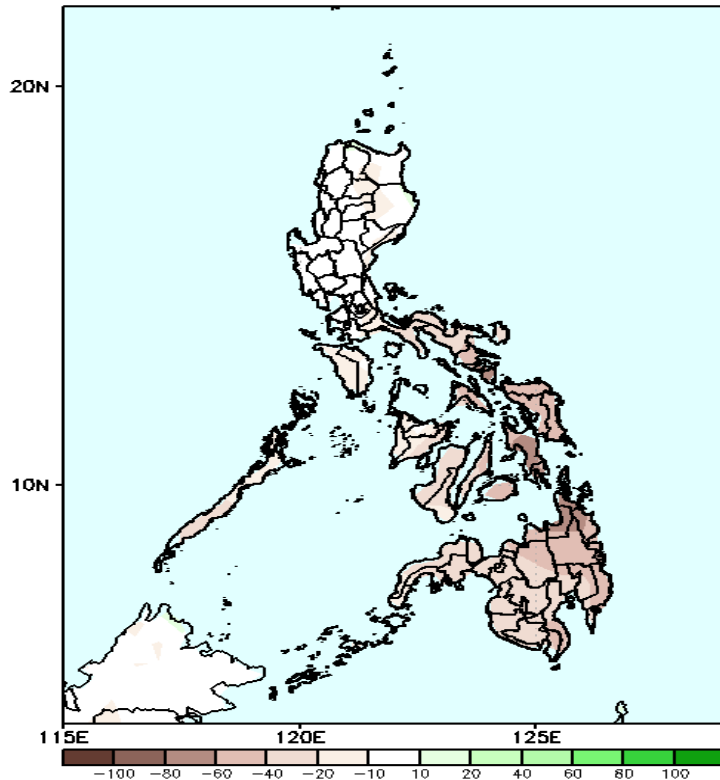
Northeast Monsoon affecting Extreme Northern Luzon while Easterlies affecting the rest of the country during the forecast period

Precipitation Anomaly and Exceedance Probability > 25/50 mm



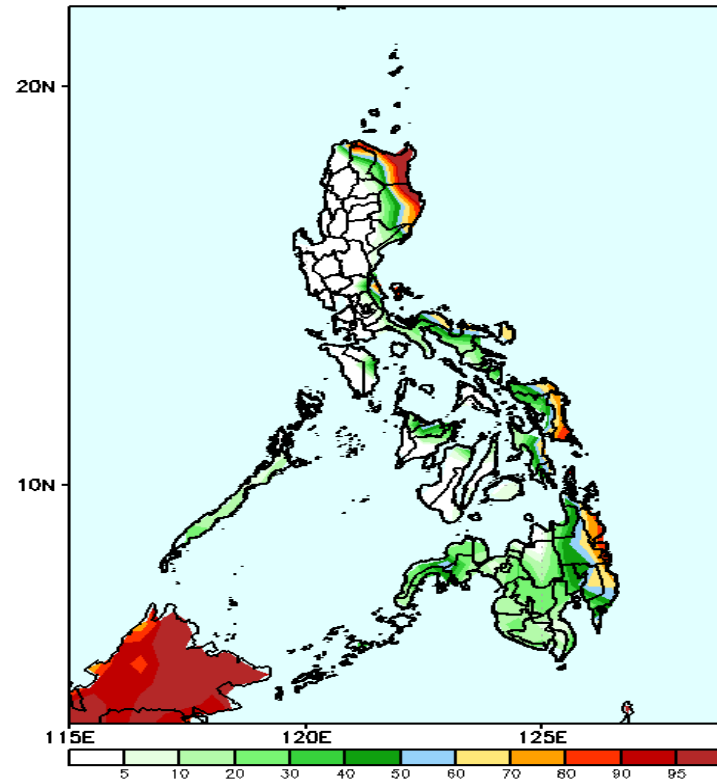
Week 1: Jan 17-23, 2025

GEFS Week-1 Precip Anomaly
Valid: 20250117 - 20250123



Rainfall deficit of 20-80mm is expected in most parts of southern Luzon, Bicol Region, Visayas, and Mindanao .

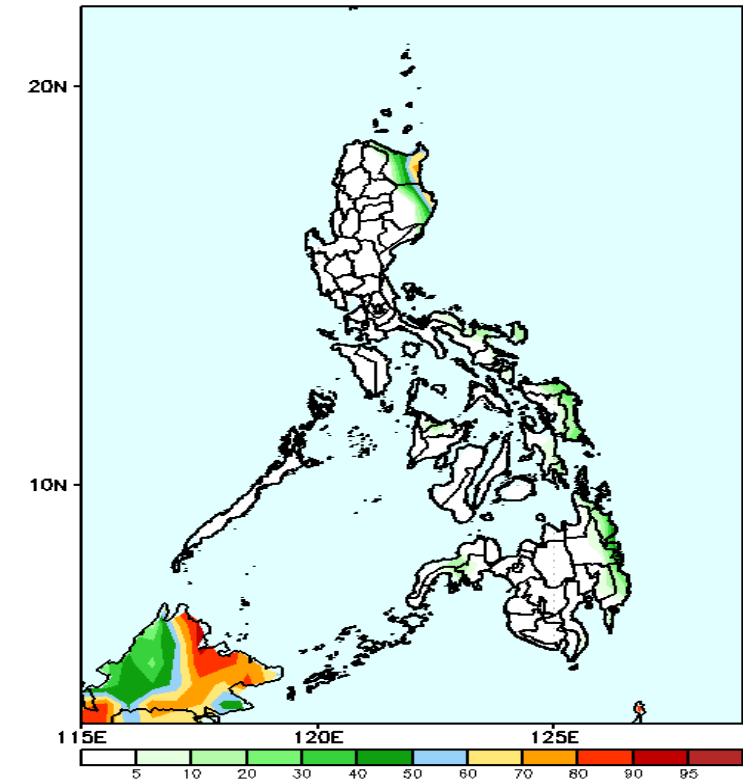
GEFS Week-1 Exceedance Prob. > 25mm
Valid: 20250117 - 20250123



Probability to Exceed 25mm

- High to very high over the eastern parts of Cagayan and Isabela
- Moderate to high over Apayao, the rest Cagayan and Isabela, Bicol Region, Eastern Visayas, Aklan, Capiz and western Mindanao;
- Low to Moderate over the rest of the country.

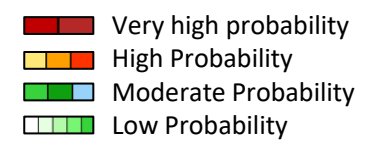
GEFS Week-1 Exceedance Prob. > 50mm
Valid: 20250117 - 20250123



Probability to Exceed 50mm

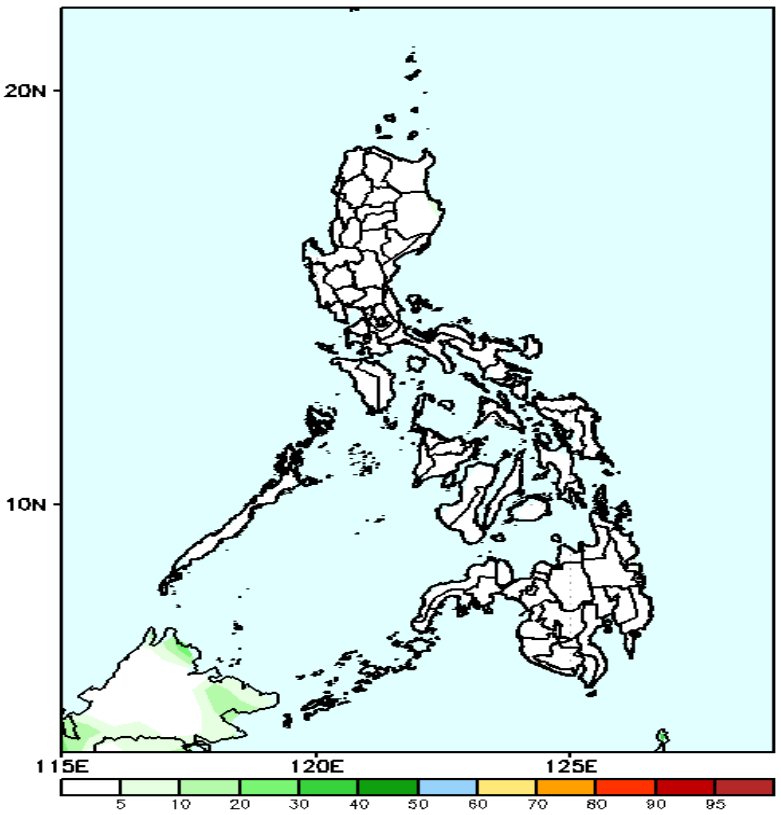
- Moderate to high over Batanes and the easternmost part of Cagayan and Isabela;
- Low over the rest of the country.

Exceedance Probability > 100/150/200 mm



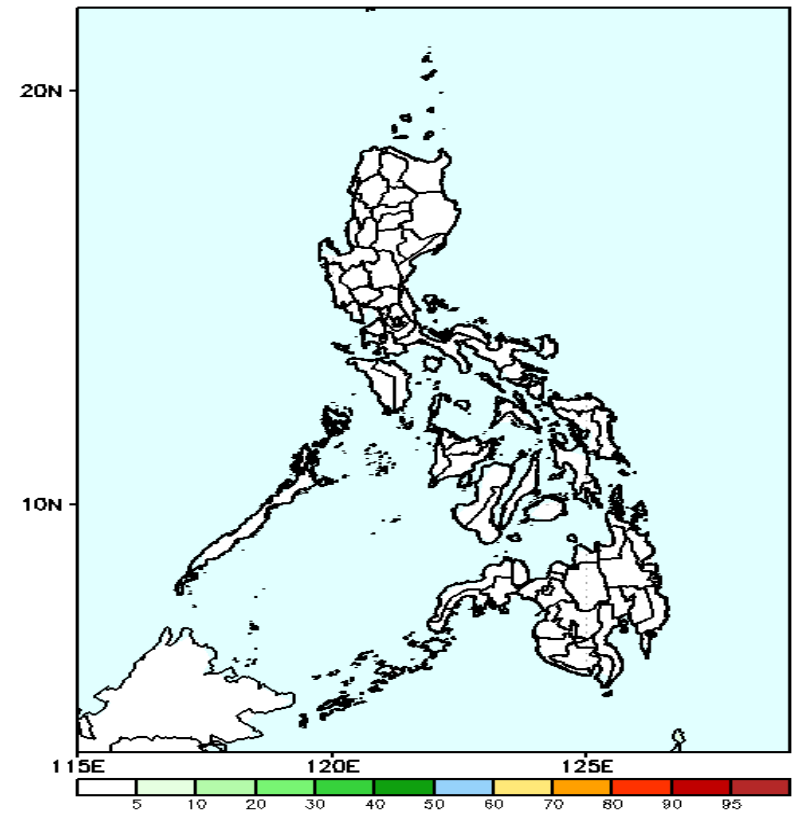
Week 1: Jan 17-23, 2025

GEFS Week-1 Exceedance Prob. > 100mm
Valid: 20250117 - 20250123



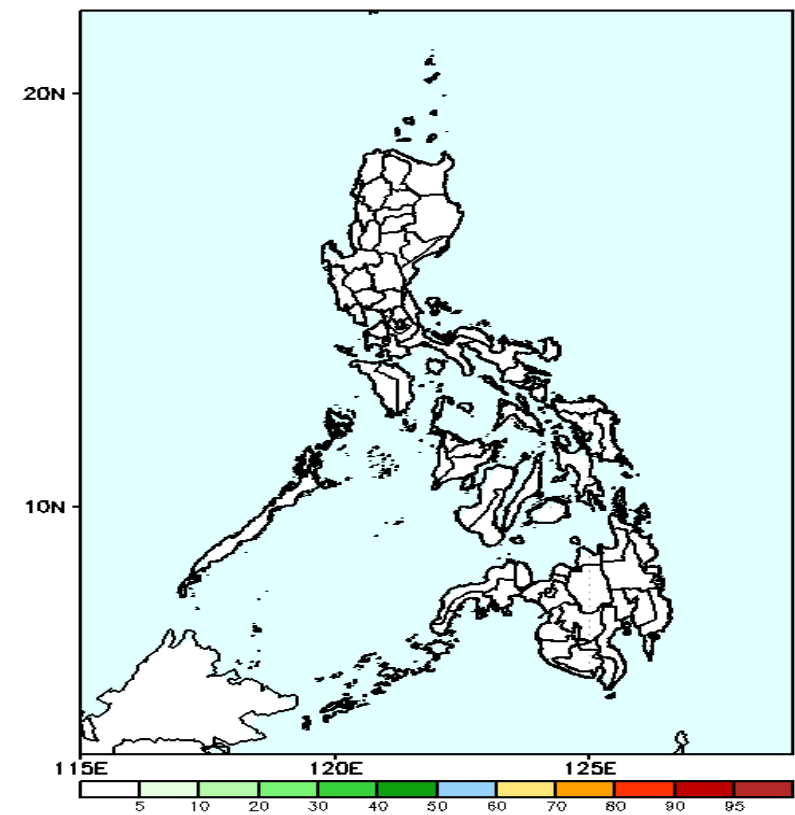
Probability to Exceed 100mm
• Low across the country.

GEFS Week-1 Exceedance Prob. > 150mm
Valid: 20250117 - 20250123



Probability to Exceed 150mm
• Low across the country.

GEFS Week-1 Exceedance Prob. > 200mm
Valid: 20250117 - 20250123

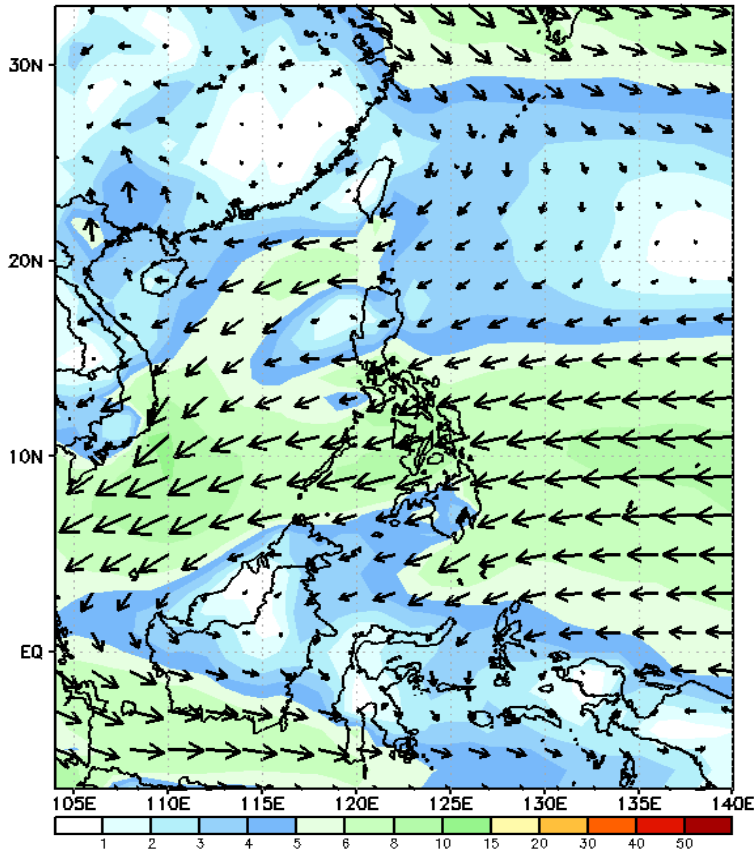


Probability to Exceed 200mm
• Low across the country.

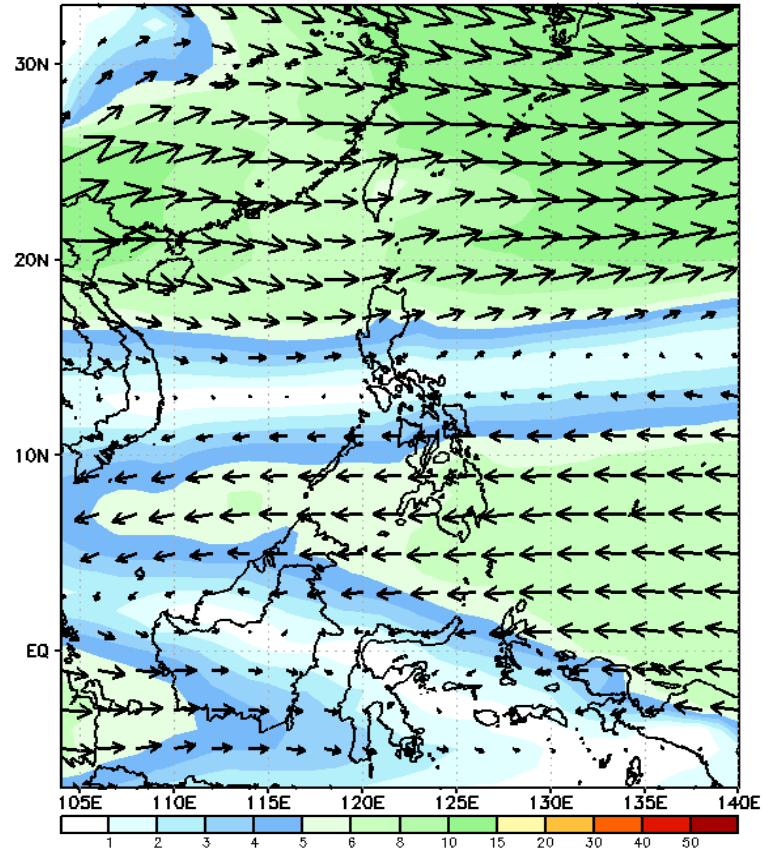
GEFS Week-2 Wind Forecasts:

Week 2: Jan 24-30, 2025

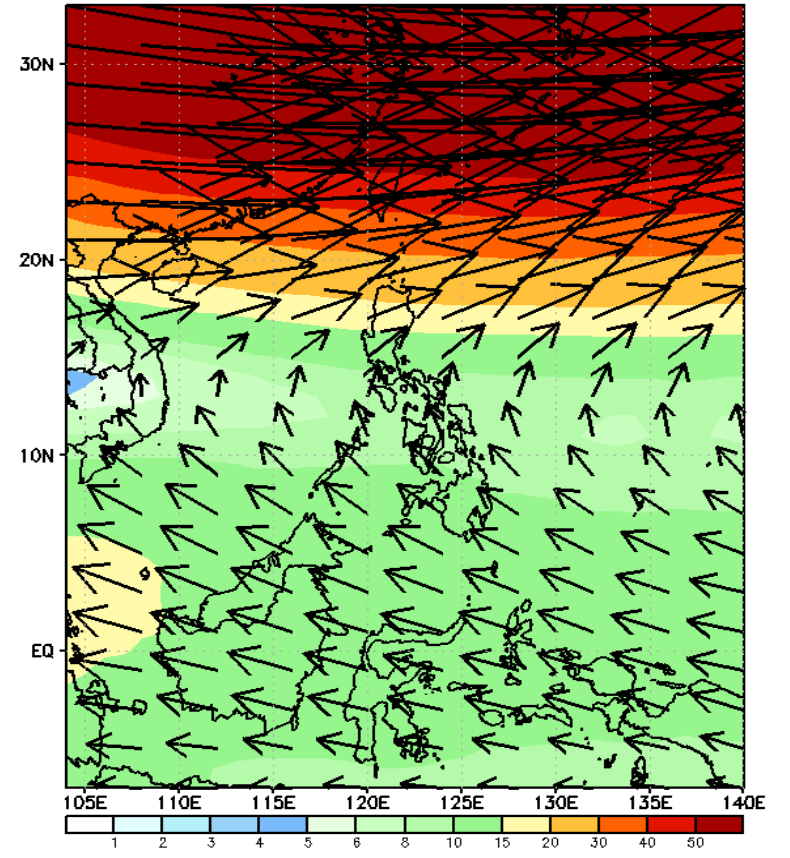
GEFS Week-2 850-hPa Wind Total
Valid: 20250124 - 20250130



GEFS Week-2 700-hPa Wind Total
Valid: 20250124 - 20250130

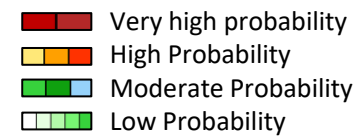


GEFS Week-2 200-hPa Wind Total
Valid: 20250124 - 20250130



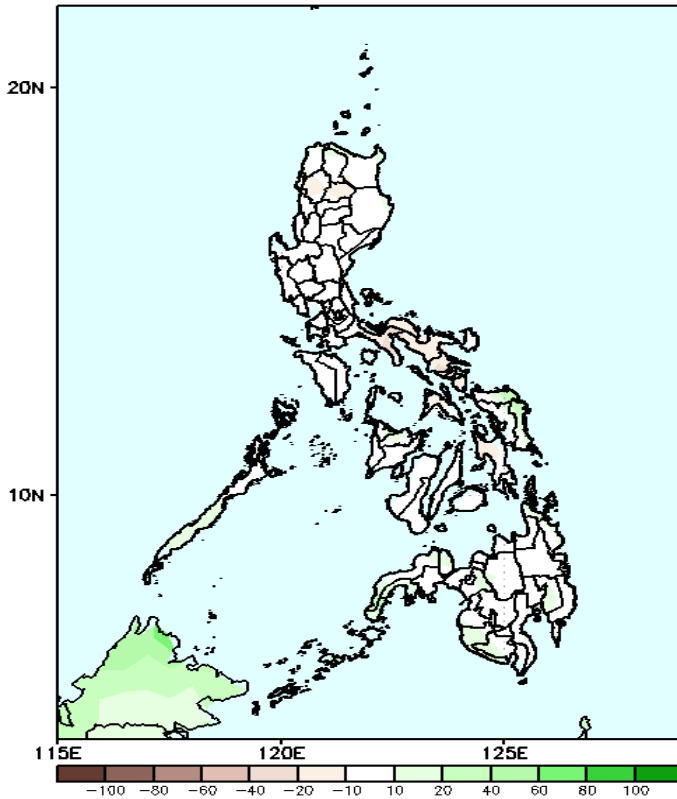
Northeast Monsoon will likely affect Northern and Central Luzon while Easterlies will likely affect the rest of the country during the forecast period

Precipitation Anomaly and Exceedance Probability > 25/50 mm



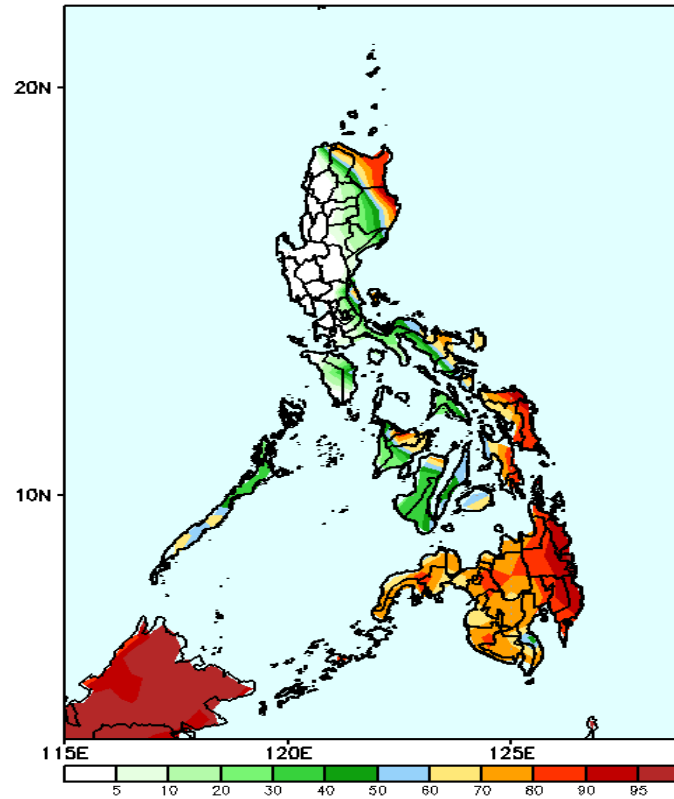
Week 2: Jan 24-30, 2025

GEFS Week-2 Precip Anomaly
Valid: 20250124 - 20250130



Increase of rainfall of 10-20mm is expected in northern Samar, southern Palawan, and Sultan Kudarat.

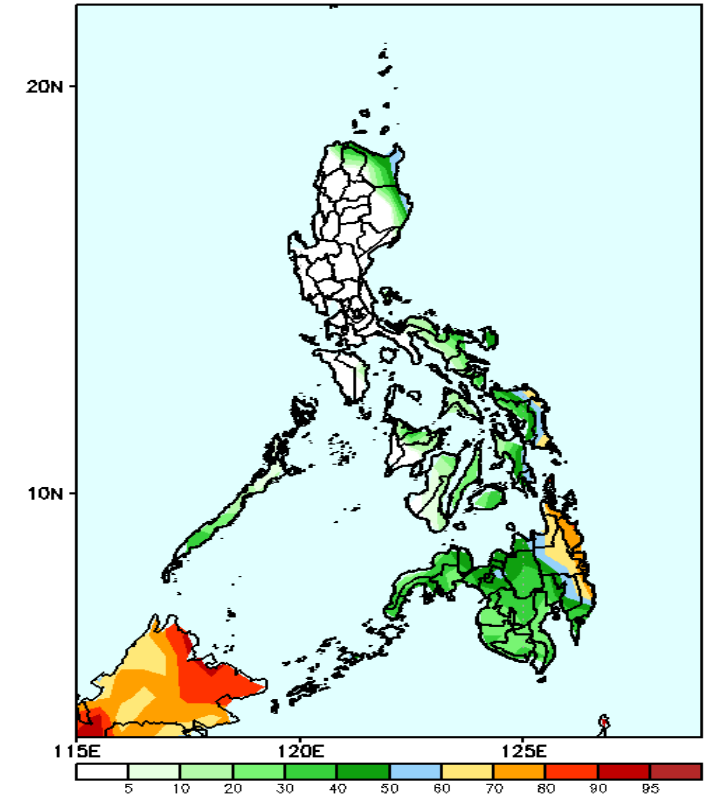
GEFS Week-2 Exceedance Prob. > 25mm
Valid: 20250124 - 20250130



Probability to Exceed 25mm

- High to very high over eastern parts of Cagayan, and Isabela, Eastern Visayas and most of Mindanao;
- Moderate to high over Batanes, Apayao, the rest of Cagayan and Isabela, Bicol Region, Palawan, and the rest of Visayas;
- Low to Moderate over the rest of the country.

GEFS Week-2 Exceedance Prob. > 50mm
Valid: 20250124 - 20250130



Probability to Exceed 50mm

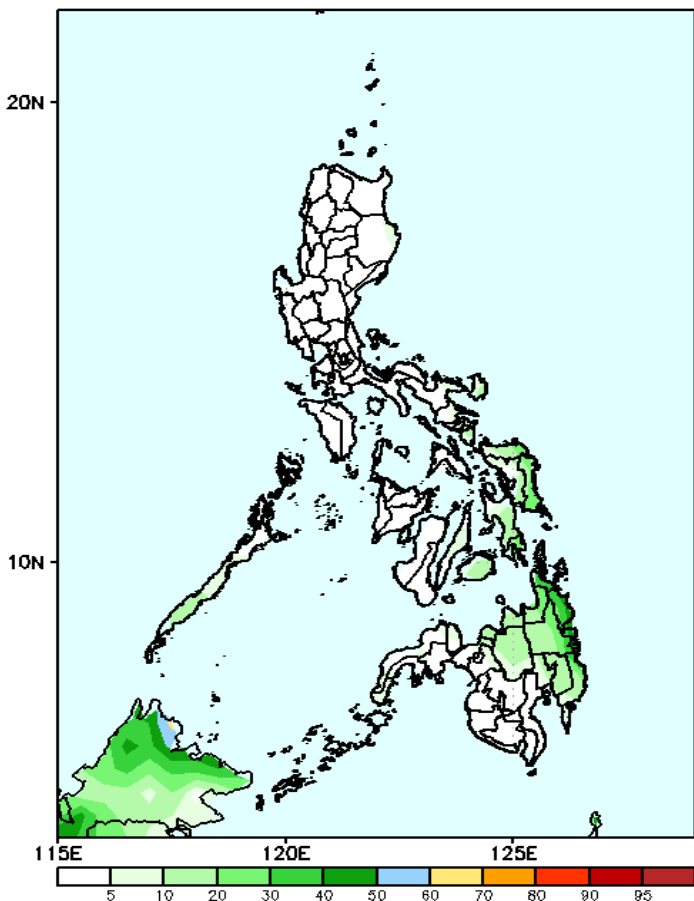
- Moderate to high over Samar Provinces and most of Mindanao;
- Low to moderate of Batanes and the easternmost part of Cagayan and Isabela, Bicol Region and the rest of Visayas;
- Low over the rest of Luzon.

Exceedance Probability > 100/150/200 mm

- Very high probability
- High Probability
- Moderate Probability
- Low Probability

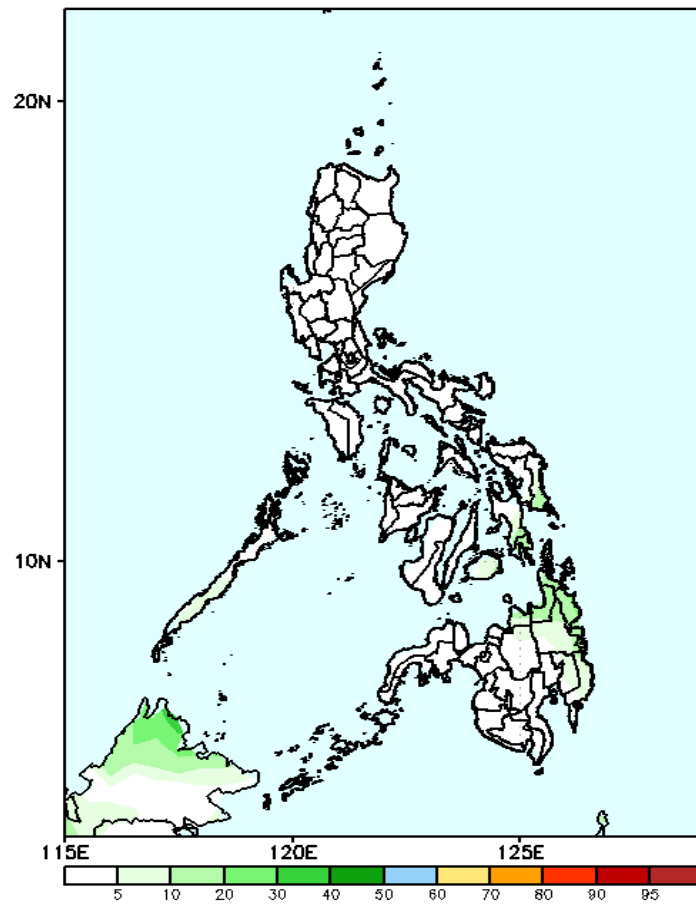
Week 2: Jan 24-30, 2025

GEFS Week-2 Exceedance Prob. > 100mm
Valid: 20250124 - 20250130



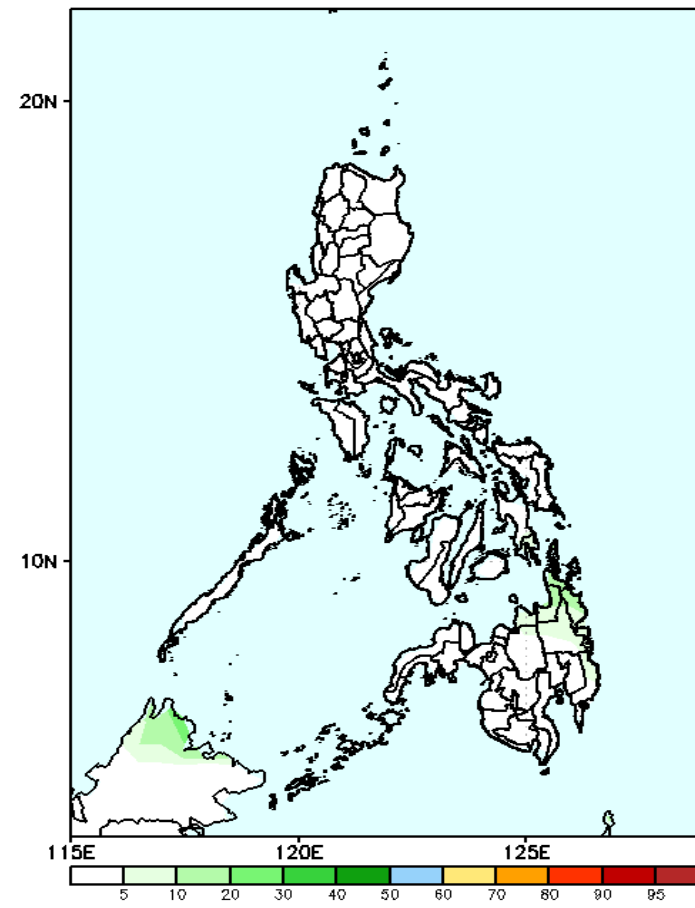
Probability to Exceed 100mm
• Low across the country.

GEFS Week-2 Exceedance Prob. > 150mm
Valid: 20250124 - 20250130



Probability to Exceed 150mm
• Low across the country.

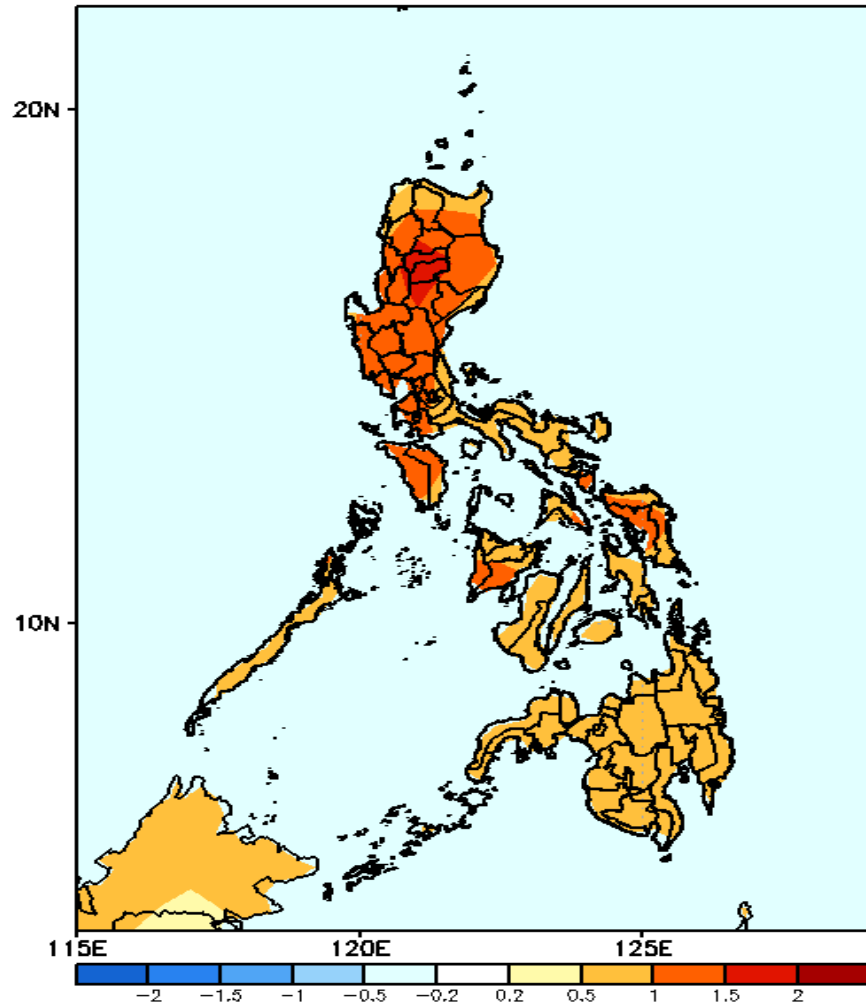
GEFS Week-2 Exceedance Prob. > 200mm
Valid: 20250124 - 20250130



Probability to Exceed 200mm
• Low across the country.

GEFS Week-1 & 2 Forecasts: T2m Anomaly

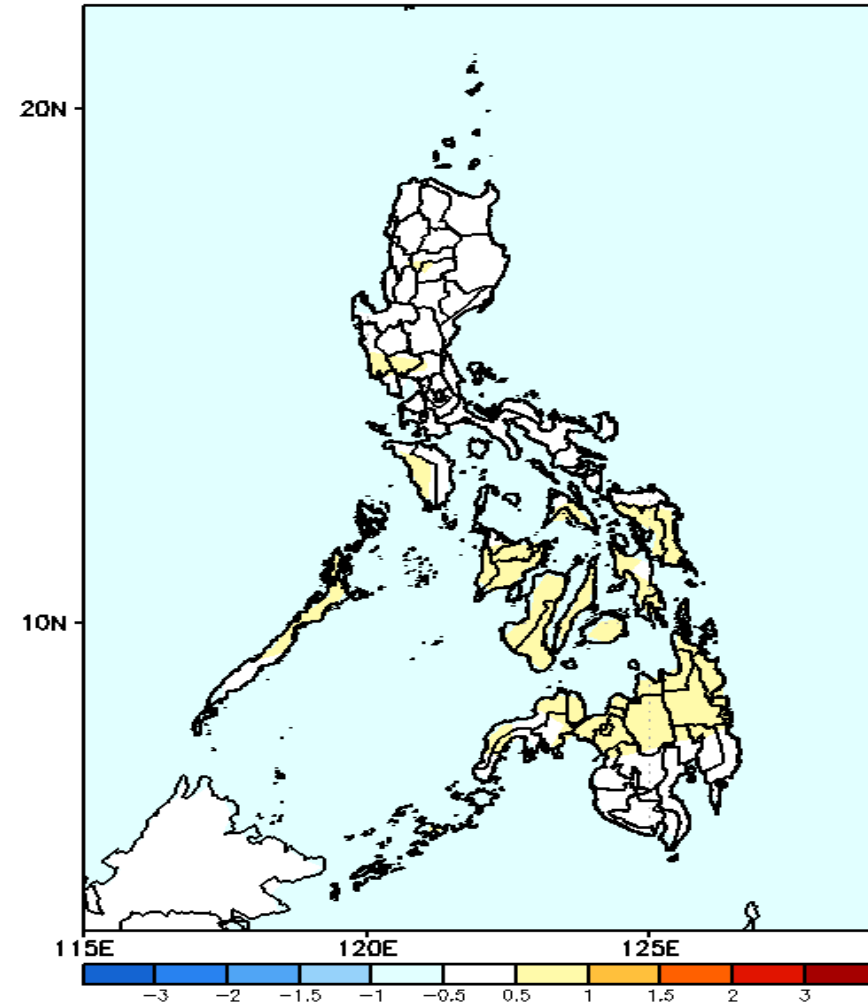
GEFS Week-1 T2m Anomaly
Valid: 20250117 - 20250123



2m Temperature Week 1: Jan 17-23, 2025

Warmer than average surface air temperature will likely be experienced in in most parts of the country.

GEFS Week-2 T2m Anomaly
Valid: 20250124 - 20250130



2m Temperature Week 2: Jan 20-26, 2025

Near to slightly warmer than average surface air temperature will likely be experienced in in most parts of the country.